

weim

SHREDDING + COMPRESSING



● TH STANDARD S SERIES
BRIQUETTE PRESSES

TECHNICAL HIGHLIGHTS



Large material hopper

for more buffer volume

The galvanized hopper, into which the material to be briquetted is fed either manually via a conveyor belt or a screw conveyor, is equipped with a rotating agitator and a discharge screw at the bottom. It is available in dimensions of 1,400 x 1,400 mm or 2,000 x 2,000 mm, depending on the required buffer volume. The machine can be used in automatic mode by means of fill level monitoring.



Highly compressed round briquettes

thanks to reliable toggle-joint mechanism

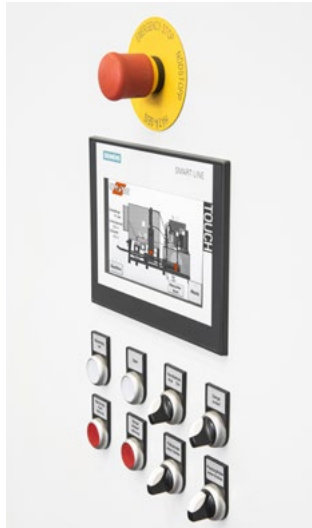
By using a so-called toggle lever mechanism, a significantly higher pressing force is achieved compared to the classic pressing clamp - up to 1,250 kg/cm². Wear is minimal, and maintenance requirements are correspondingly low.

Maximum variability

thanks to modular design

If required, individual components, such as the tank, the press unit or the oil tank, can be flexibly positioned. We call this option "Vario". The machine adapts to your individual production requirements - not vice versa. Integration into existing production lines is extremely convenient. This means that all avenues are open to you, even for future optimization.





Convenient operation

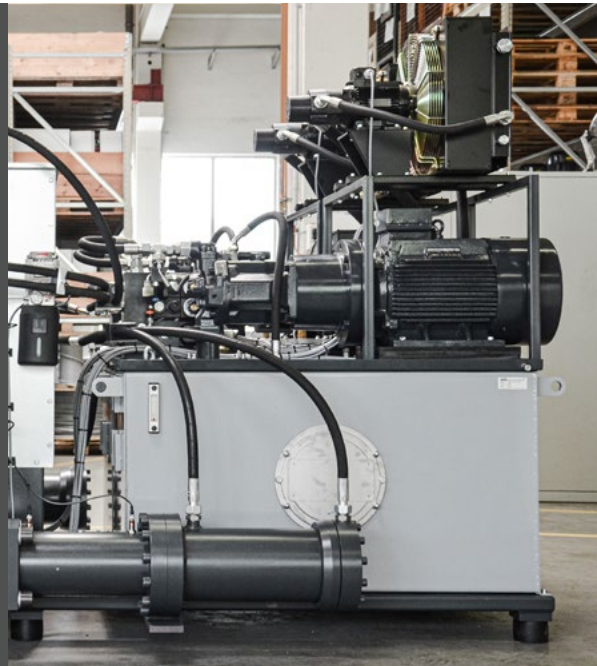
with advanced Siemens
PLC control

We manufacture all briquetting press control cabinets ourselves in our German plants in Ilsfeld, Abstatt and Annaburg. For this purpose, we use only brand-name components - and this also applies to our machine control system. The high-quality Siemens PLC control system with touch display optimally coordinates the components with each other, which makes it possible to achieve a consistently high briquette quality.

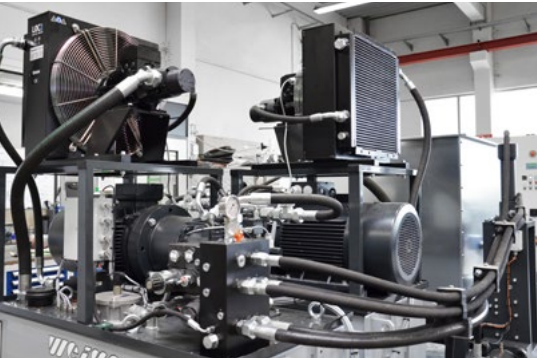
LONGER BRIQUETTING, MORE PRESSING CYCLES

with large hydraulic oil tank and
large pressing mechanism

The larger the hydraulic tank, the longer it takes for all of the oil to heat up. This has a positive effect on the working time of the briquette press. The hydraulic unit is also temperature controlled. All in all, this results in significantly increased throughput due to fast pressing cycles and a more robust overall machine.



TECHNICAL HIGHLIGHTS



Non-stop briquetting thanks to standard oil cooling

TH Standard S machines are equipped with hydraulic oil cooling as standard. This allows the briquetting press to be used for multi-shift, automated operation.



Rectangular briquettes in retail quality

The TH 1200 is the only machine with clamp technology that produces rectangular briquettes measuring 150 x 60 mm with variable lengths. These can be ideally stacked, packed and then sold profitably. The voluminous hydraulic unit allows multi-shift operation with high throughput rates. Highly compressed briquettes are produced with the aid of a generously dimensioned clamping cylinder.

Minimized wear during the pressing process

To reduce wear during briquetting, WEIMA relies on specially hardened components that are easy to replace during routine maintenance. These include the pressing chamber wear sleeve below the filling tower and chrome-plated clamp halves that press the final briquette. In addition, bolted PU plates are used on the filling cylinder during pre-compaction.





Even higher throughput rates
with the Duo, Trio or Quattro version

To further increase the throughput and availability of a machine, briquetting presses of the TH Standard S series can be optionally equipped with additional screw conveyors and pressing mechanisms. The hopper size remains the same. This saves space that would otherwise have to be used for another machine.



**Dust-reduced
compression**

for more safety and
cleanliness

Briquetting is carried out without the addition of adhesives or binders, which makes subsequent use for energy purposes harmless. Thanks to a closed pressing system, the continuous escape of dust is also effectively prevented. This protects your employees and keeps your production halls clean.





TECHNICAL DATA AND MACHINE CONFIGURATION

● Technical data TH Standard S series

	TH 814 - 820 S	TH 914 - 920 S	TH 1200
Briquette diameter [mm]	80	90	-
Briquette shape and size [mm]	-	-	150x60
Throughput rate up to [kg/h] ¹⁾	250	300	500
Hydraulic motor [kW]	22	30	22
Hydraulic oil volume [liter]	600	600	600
Weight [approx. kg]	2,200	2,200	2,500
Space requirement (L x W x H) [approx. mm] ²⁾	1,790 x 2,646 x 1,515	1,790 x 2,646 x 1,515	1,890 x 2,936 x 1,836

1) depending on material

2) detailed dimensions upon request

Machine configuration TH Standard S series

● Standard ○ Optional – Not available

MECHANICS			
Press mechanics with clamp cylinder	●	●	●
Briquette length monitoring	●	●	●
Connecting piece to pre-compactor	○	○	○
Central lubrication system	○	○	○
Pressing chamber wear sleeve	●	●	–
Chrome plated clamp	●	●	●
HYDRAULICS			
Hydraulic power unit with 600 l tank	●	●	●
Hydraulic oil cooling	○	○	○
Safety switch for oil temperature	●	●	●
Vario option (different hose lengths)	○	○	○
HOPPER			
Hopper size 1,400 x 1,400 mm	○	○	○
Hopper size 2,000 x 2,000 mm	○	○	○
On-off automatic with level limit switch	○	○	○
Inspection cover with limit switch	○	○	○
Reinforced agitator gear motor	○	○	○
Sheet metal hopper cover	○	○	○
Hopper corners and cone plates	○	○	○
ELECTRICAL			
Control cabinet with Siemens PLC control	●	●	●
OTHER FEATURES			
Stable base frame on rubber feet	●	●	●
Drain pan with pump sump	–	–	○

Other variations, special equipment and technical modifications are available upon request.



WEIMA Maschinenbau GmbH | weima.com

Bustadt 6-10 | 74360 Ilsfeld (Germany) | Phone: +49 (0)70 62 95 70-0 | Fax: +49 (0)70 62 95 70-92 | info@weima.com

Subject to technical changes | 01082021