

weima

SHREDDING + COMPRESSING



**WEIMA PUEHLER C SERIES
CHIP PRESS**

TECHNICAL HIGHLIGHTS



Simple Installation plug-and-play solution

In order to make installation as convenient as possible, the PUEHLER C series presses are preset and delivered ready for operation as a plug-and-play solution. All that is required for installation is a power connection and the alignment to the up-stream processing machine. If desired, we also offer on-site or remote start-up assistance.

GOOD TO KNOW.

Due to its compact design, the Puehler press fits under all standard machine conveyors.



Compact discs thanks to conical ejector

Two half shells on the conical discharge pipe, which are closed by disc springs or hydraulically, allow the chips to be pressed into discs with a diameter of 200 mm.



Simple Operation

through user-friendly Touch Screen HMI

Various parameters (e.g. press cycles) can be set quickly via the color display of the built-in PLC control. A simple signal connects the press to the processing machine allowing it to only operate when the chip conveyor is in activated.

To minimize down time, precise diagnostic messages are displayed for troubleshooting.



Robust design against interference and jamming by eliminating the auger

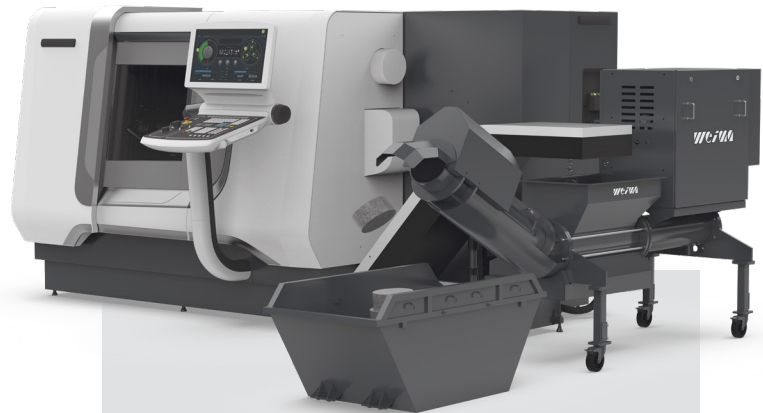
The press works with a hydraulic ram and due to the large press chamber, does not require a screw conveyor, separate pre-compression or other moving parts. Jamming or bridging are effectively eliminated. Impurities or long, tangled chips are simply compressed in the outfeed.



DID YOU KNOW?

Depending on the material, compression ration can be as high as 10:1.

This reduces handling and disposal costs to a minimum.



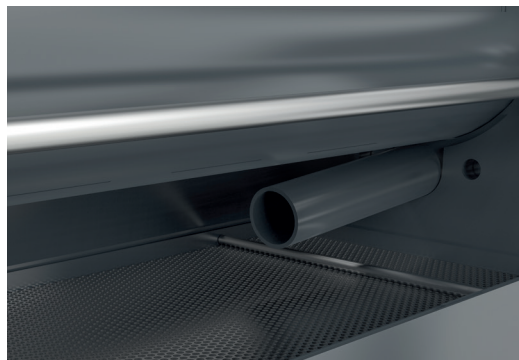
DIRECT POSITIONING UNDER THE CHIP CONVEYOR

thanks to height adjustable machine feet

The Puehler machine can be easily integrated with existing machinery by the use of height adjustable machine feet allowing the filling height to be individually adjusted.

Recovery of expensive cutting fluids thanks to the hydraulic pressing process

Chips are fed into the pressing chamber from the chip conveyor via a large funnel. There they are compressed and dewatered using a horizontal press cylinder with press ram. The recovered liquid is collected and filtered in a tray below the press channel. As a result, the cutting fluid can be returned directly to the machine or sent back to a central system for further processing.



TECHNICAL HIGHLIGHTS



MORE FLEXIBILITY AND BUFFER VOLUME

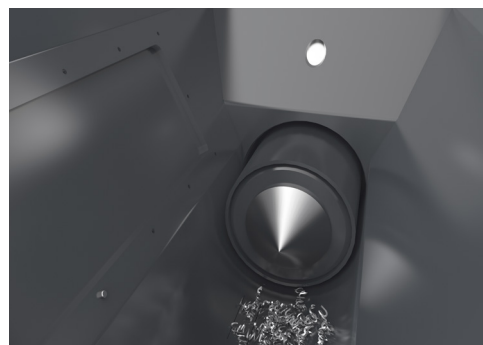
Thanks to the second press cylinder in the Duo configuration

The two independently operating press rams of the PUEHLER C.200 Duo can be filled one after the other with the help of a movable diverter plate in the hopper. To reduce downtime, both press chambers can be alternately filled. In the event of a fault, the machine automatically switches to the available press cylinder.

Worry-free Automatic Operation

By integrated sensors in the hopper

Using integrated sensors in the feed hopper, the press can function automatically. When a predetermined level in the hopper is reached, the press automatically turns on. To reduce wear and tear on the machine components, the press automatically stops as soon as the hopper level falls below a pre-set level.



Universal Application

For various type of machine tool swarf

Chips can be generated from various processes including turning, milling, sawing or drilling. The C Series dewaterers and compacts all common metal chips including aluminum, steel, brass, copper, bronze and more. In this way, large piles of chips are turned into compacted discs. Cooling lubricant, oil, emulsion or water can be easily recycled or disposed of.

COMPRESSION ADVANTAGES

Since the compressed chips have less residual moisture, their weight is decreased and in some cases the scrap value is increased.



TECHNICAL DATA AND MACHINE CONFIGURATION



Technical data PUEHLER C series

| | C-200 | C-200 Duo |
|--|---------------------|-----------------------|
| Disc diameter [mm] | 200 | 200 |
| Throughput rate [m³/h] ¹⁾ | up to 2 | up to 4 |
| Performance | 460 V 60 Hz | 2x 460 V 60 Hz |
| Residual moisture ¹⁾ | up to 3 % | up to 3 % |
| Degree of compaction ¹⁾ | up to 1:10 | up to 1:10 |
| Space requirement (L×W×H) [approx. mm] ²⁾ | 2.911 × 750 × 1.723 | 3.217 × 1.250 × 2.130 |

1) depending on material
2) detailed dimensions upon request

Machine configuration PUEHLER C series

● Standard ○ Optional – Not available

| | C-200 | C-200 Duo |
|--|-------|-----------|
| MATERIAL FEED | | |
| Hopper 160 l | ● | – |
| Hopper 550 l | – | ● |
| MATERIAL DISCHARGE | | |
| Drain pan (20 l) | ● | – |
| Drain pan (40 l) | – | ● |
| Centrifugal pump (at drain pan) | ○ | ○ |
| Level sensors | ○ | ○ |
| Quick couplings | ○ | ○ |
| HYDRAULICS | | |
| Hydraulic press stamp | ● | ● |
| Cutting plate on press stamp | ○ | ○ |
| Aluminum hydraulic tank (40 l) | ● | – |
| Aluminum hydraulic tank (80 l) | – | ● |
| ELECTRICAL | | |
| Control cabinet with PLC control | ● | ● |
| Electrical connection for accessories | ○ | ○ |
| Networking of upstream and downstream machines | ○ | ○ |

Other variations, special equipment and technical modifications are available upon request.



WEIMA America, Inc. | weima.com

3678 Centre Circle | Fort Mill, SC 29715 (USA) | Phone: +1 (888) 440-7170 | info.us@weima.com

Subject to technical changes | 20012022